

**American College of Physicians - Internal Medicine Meeting 2026  
San Francisco, CA**

**Ultrasound-Guided Thoracentesis**

**Faculty Information**

***Director:***

**Aaron J. Calderon, MD, FACP, SFHM**

**Alyssa V. Burkhardt, MD, FACP, FHM**

**Alice Gallo De Moraes, MD, FACP**


**Sophia Raia, MD, MS, Resident/Fellow Member**

**Neil Winawer, MD, Member, SFHM**

Posted Date: March 10, 2026

©2026 American College of Physicians. All rights reserved. Reproduction of presentations, or print or electronic material associated with presentations, is prohibited without written permission from the ACP.

Any use of program content, the name of a speaker and/or program title, or the name of ACP without the written consent of ACP is prohibited. For purposes of the preceding sentence, "program content" includes, but is not limited to, oral presentations, audiovisual materials used by speakers, program handouts, and/or summaries of the same. This rule applies before, after, and during the activity



★

**ACCP**<sup>SM</sup>

**American College of Physicians**  
Leading Internal Medicine, Improving Lives

**THORACENTESIS**


April 17, 2026

Aaron J. Calderon, MD, FACP, SFHM  
Director, Academic Department of Internal Medicine  
Program Director, Internal Medicine Residency, Saint Joseph Hospital  
Founder, GME Simulation/Procedural Skills Lab, Saint Joseph Hospital  
Clinical Professor of Medicine, University of Colorado SOM  
Aaron.Calderon@imail.org

1

**Disclosure of Financial Relationships**

Visit any speaker's profile within the *ACP Meeting* mobile app or the meeting's web platform to view disclosure of relevant financial relationships.



2

## OUR TEAM

- Alyssa Burkhart, MD
  - Billings Clinic, Montana
- Alice Gallo de Moraes, MD
  - Mayo Clinic, Rochester
- Sophia Raia, MD
  - Maine Medical Center
- Neil Winawer, MD
  - Emory University-Grady Hospital

3

## Outline

- Relative Contraindications
- Optimal Site & Management
- Complications



4


## Relative Contraindications


- PT and/or PTT  $\geq$  2x normal
- Platelet count  $\leq$  20,000 – 50,000
- Creatinine  $\geq$  6.0
- Unstable patient
- Infection over insertion site
- Mechanical Ventilation
- If doesn't meet Light's criteria for landmark



5

**STANDARDS OF PRACTICE**





### Society of Interventional Radiology Consensus Guidelines for the Periprocedural Management of Thrombotic and Bleeding Risk in Patients Undergoing Percutaneous Image-Guided Interventions – Part II: Recommendations

Endorsed by the Canadian Association for Interventional Radiology and the Cardiovascular and  
Interventional Radiological Society of Europe  
Indravadan J. Patel, MD, Shiraz Rahim, MD, Jon C. Davidson, MD, Sue E. Hanks, MD,  
Alda L. Tam, MD, T. Gregory Walker, MD, Luke R. Wilkins, MD, Ravi Sarode, MD, and  
Ido Weinberg, MD

6

## Coagulation & Hemostasis

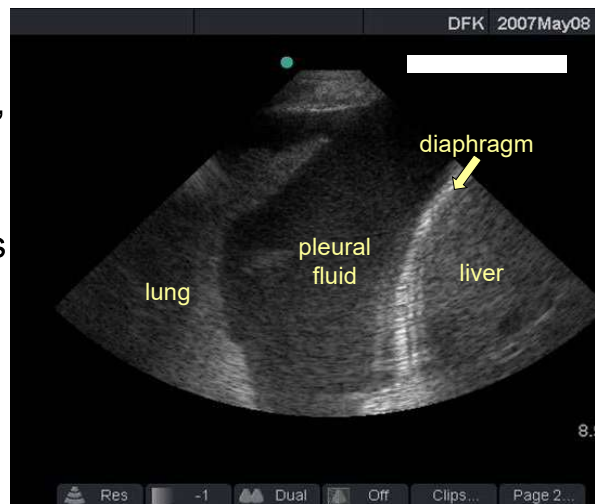
- Coags & Platelet counts not routinely indicated
- Lower INR to 2-3 if on warfarin
- Transfuse platelets if less than 20,000
- Don't routinely need to hold DOACS, LMWH, P2Y12 inh
- **Caveats:**
  1. Observational data
  2. Controversial (other countries recs differ)
  3. Assumes a skilled operator; use of ultrasound
  4. RISK vs BENEFIT
  5. Each patient is an "N of 1"



7

## Thoracentesis Procedure

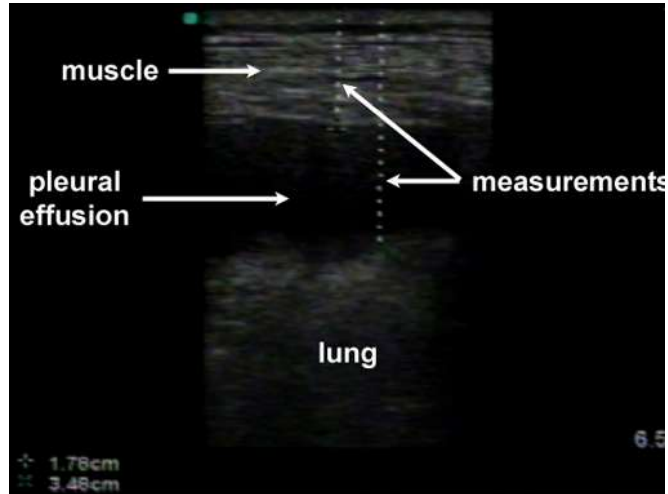
- Besides fluid must identify, diaphragm, inner chest wall and lung
- The lung is seen as an echogenic structure moving with respiration



8

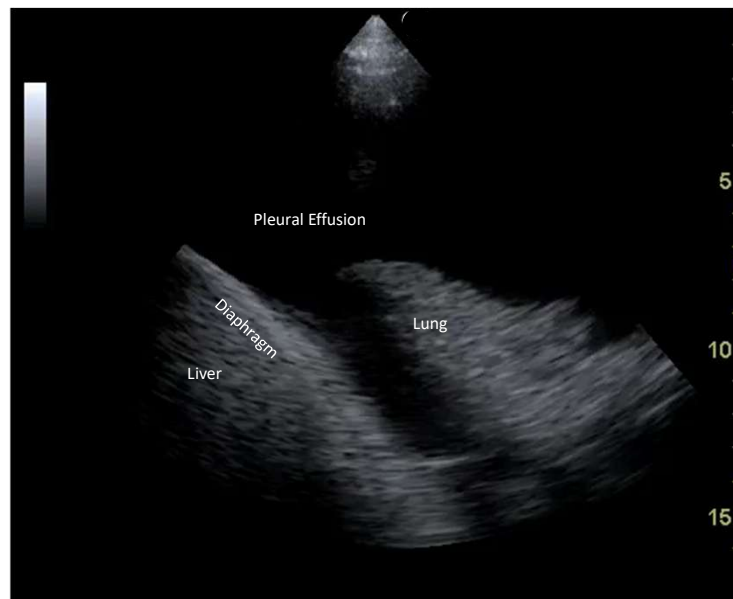
## Thoracentesis Procedure

- Look for the deepest pocket of fluid superficial to the lung
- Measure to determine needle depth



9

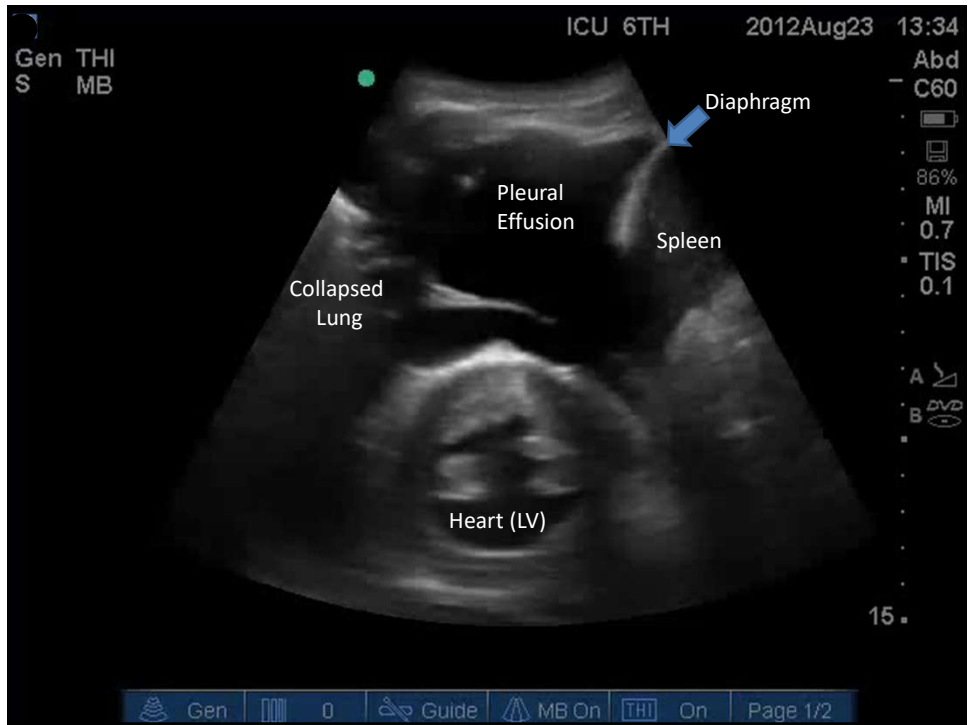
## Anechoic Pleural Effusion



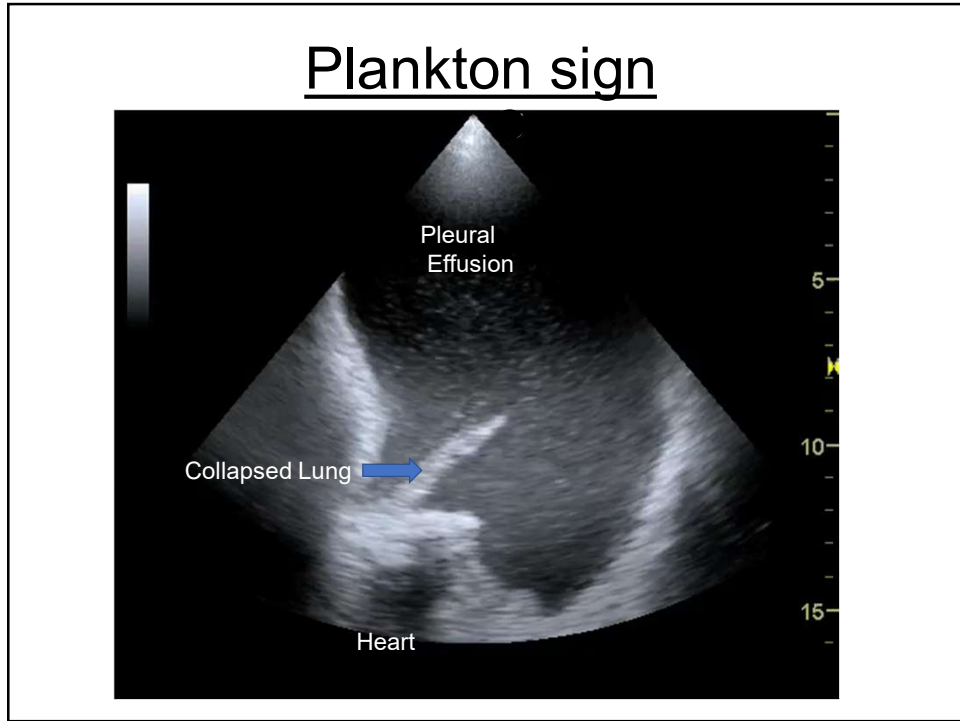
10



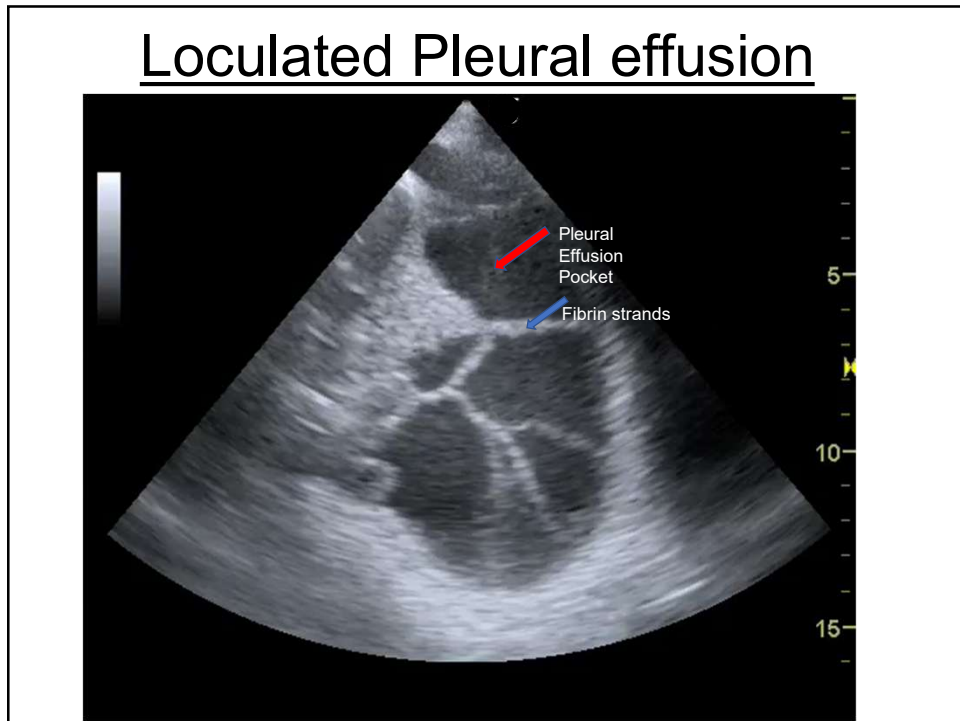
11



12



13



14

## Complications

- Pneumothorax
- Reexpansion pulmonary edema
- Intercostal artery laceration
- Bleeding
- Infection
- Vagal reaction



15

### REVIEW ARTICLE

## Pneumothorax Following Thoracentesis

### *A Systematic Review and Meta-analysis*

Craig E. Gordon, MD, MS; David Feller-Kopman, MD; Ethan M. Balk, MD, MPH; Gerald W. Smetana, MD

**Background:** Little is known about the factors related to the development of pneumothorax following thoracentesis. We aimed to determine the mean pneumothorax rate following thoracentesis and to identify risk factors for pneumothorax through a systematic review and meta-analysis.

**Methods:** We reviewed MEDLINE-indexed studies from January 1, 1966, through April 1, 2009, and included studies of any design with at least 10 patients that reported the pneumothorax rate following thoracentesis. Two investigators independently extracted data on the pneumothorax rate, risk factors for pneumothorax, and study methodological quality.

**Results:** Twenty-four studies reported pneumothorax rates following 6605 thoracenteses. The overall pneumothorax rate was 6.0% (95% confidence interval [CI], 4.6%-7.8%), and 34.1% of pneumothoraces required chest tube insertion. Ultrasonography use was associated with significantly lower risk of pneumothorax (odds ratio [OR], 0.3; 95% CI, 0.2-0.7). Lower pneumothorax rates were observed with experienced operators (3.9% vs 8.5%,  $P=.04$ ),

but this was nonsignificant within studies directly comparing this factor (OR, 0.7; 95% CI, 0.2-2.3). Pneumothorax was more likely following therapeutic thoracentesis (OR, 2.6; 95% CI, 1.8-3.8), in conjunction with periprocedural symptoms (OR, 26.6; 95% CI, 2.7-262.5), and in association with, although nonsignificantly, mechanical ventilation (OR, 4.0; 95% CI, 0.95-16.8). Two or more needle passes conferred a nonsignificant increased risk of pneumothorax (OR, 2.5; 95% CI, 0.3-20.1).

**Conclusions:** Iatrogenic pneumothorax is a common complication of thoracentesis and frequently requires chest tube insertion. Real-time ultrasonography use is a modifiable factor that reduces the pneumothorax rate. Performance of thoracentesis for therapeutic purposes and in patients undergoing mechanical ventilation confers a higher likelihood of pneumothorax. Experienced operators may have lower pneumothorax rates. Patient safety may be improved by changes in clinical practice in accord with these findings.

*Arch Intern Med.* 2010;170(4):332-339

16

## Complication Rate

Table 1 Complication rates of pleural aspiration by operator and image guidance

Ultrasound guidance	Operator	Frequency of post-procedure pneumothorax	Frequency that a chest drain was required post procedure	Frequency of dry tap/procedure failure
Yes	Radiologist in training	2.7%	1.8%	2.7%
Yes	Senior physician	3.6%	0.9%	3.2%
Yes	Radiologist	2.7%	0.5%	
No	Physician in training	15.0%	4.7%	12.9%
No	Senior physician	5.7%	1.4%	1.6%

The calculations and references used in this table are shown in appendix 1 in the online supplement.<sup>132-134</sup>

*Thorax* 2010;65(Suppl 2):i61-i76. doi:10.1136/thx.2010.137026

17

## Tension Pneumothorax

- Chest pain, hypotension, tachycardia
- Emergent needle decompression
- **Use no smaller than 3.25 inch 14 gauge needle**
- Smaller needle size associated with high failure rate
- 2<sup>nd</sup> intercostal space; mid-clavicular line

18

## 2010 British Thoracic Society Guidelines

- **Follow Up CXR?**
- A chest x-ray after a simple pleural aspiration is **not required unless** air is withdrawn, the procedure is difficult, multiple attempts are required or the patient becomes symptomatic. (C)



19

# CHEST

## Original Research

PULMONARY PROCEDURES

### Diagnosis of Pneumothorax by Radiography and Ultrasonography

#### A Meta-analysis

Wu Ding, MM; Yuehong Shen, MM; Jianxin Yang, MM; Xiaojun He, MM; and Mao Zhang, MD

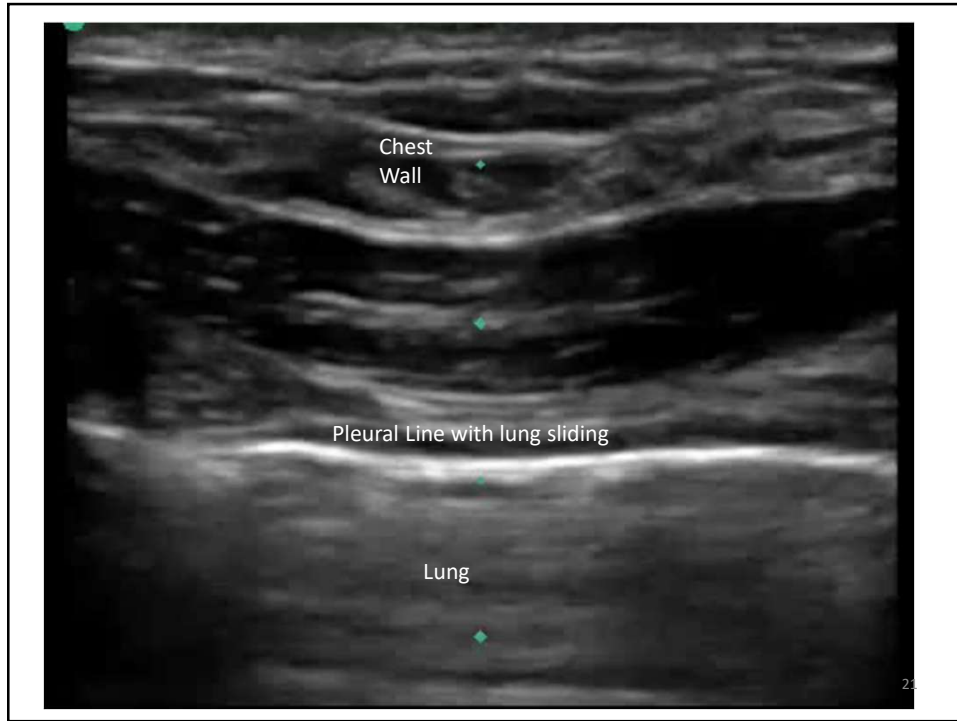
**Conclusions:** “bedside ultrasound performed by clinicians had a higher sensitivity and similar specificity compared to CXR for the diagnosis of pneumothorax, **but** the accuracy of ultrasound depended on the skill of the operators.”

Chest 2011; 140(4):859-866

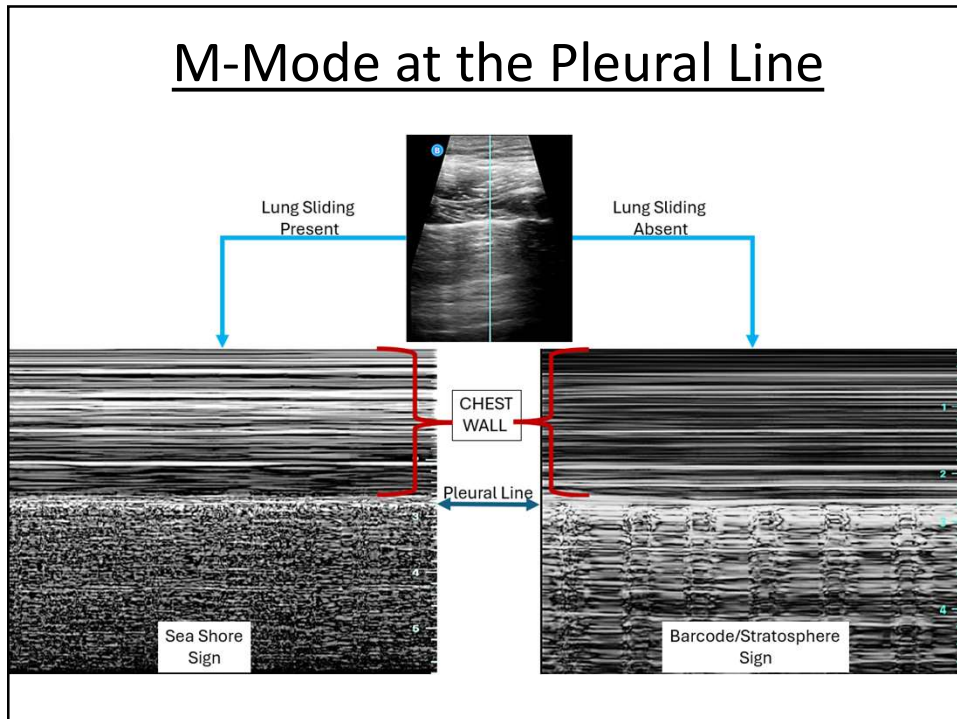


20

20



21

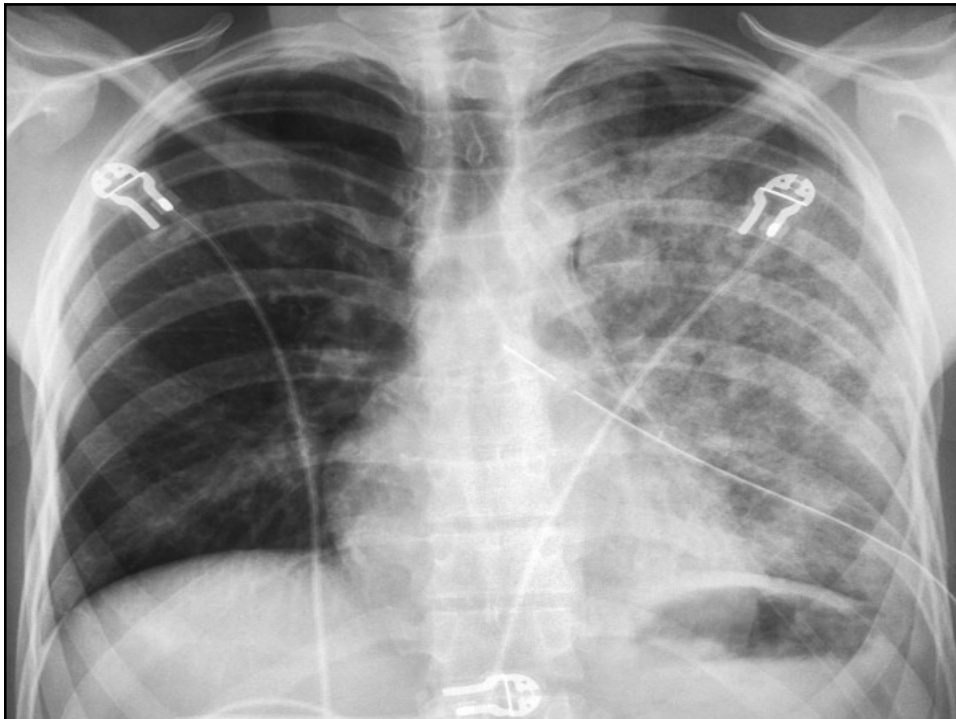


22

## Reexpansion Pulmonary Edema

- Very rare complication; mechanism unknown
- Dyspnea, tachypnea, cough, fever, tachycardia
- **Unilateral pulmonary edema** in lung that rapidly reexpands; can be bilateral
- Lung has typically been collapsed for  $\geq 3$  days
- Usually occurs within 3 hours of procedure; almost all by 24hrs
- May last 2-5 days
- **“Rule of 3’s”**

23



24

## Reexpansion Pulmonary Edema

### Treatment

- Supportive care (oxygen, mechanical ventilation)
- Diuretics not routinely recommended

### Prevention

- Limit fluid removal to 1-1.5 liters (myth)
- Keep pleural pressure > than -20 cm H<sub>2</sub>O
- Chest tightness/discomfort correlates



25

25

## Large-Volume Thoracentesis and the Risk of Reexpansion Pulmonary Edema

David Feller-Kopman MD, David Berkowitz, MD, Phillip Boiselle, MD, and Armin Ernst, MD

Departments of Interventional Pulmonology and Radiology, Beth Israel Deaconess Medical Center, Harvard Medical School, Boston, Massachusetts

**Background.** To avoid reexpansion pulmonary edema (RPE), thoracenteses are often limited to draining no more than 1 L. There are, however, significant clinical benefits to removing more than 1 L of fluid. The purpose of this study was to define the incidence of RPE among patients undergoing large-volume ( $\geq 1$  L) thoracentesis.

**Methods.** One hundred eighty-five patients undergoing large-volume thoracentesis were included in this study. The volume of fluid removed, absolute pleural pressure, pleural elastance, and symptoms during thoracentesis were compared in patients who did and did not experience RPE.

**Results.** Of the 185 patients, 98 (53%) had between 1 L and 1.5 L withdrawn, 40 (22%) had between 1.5 L and 2 L withdrawn, 38 (20%) had between 2 L and 3 L withdrawn, and 9 (5%) had more than 3 L withdrawn. Only 1 patient (0.5%, 95% confidence interval: 0.01% to 3%) experienced

clinical RPE. Four patients (2.2%, 95% confidence interval: 0.06% to 5.4%) had radiographic RPE (diagnosed only on postprocedure imaging without clinical symptoms). The incidence of RPE was not associated with the absolute change in pleural pressure, pleural elastance, or symptoms during thoracentesis.

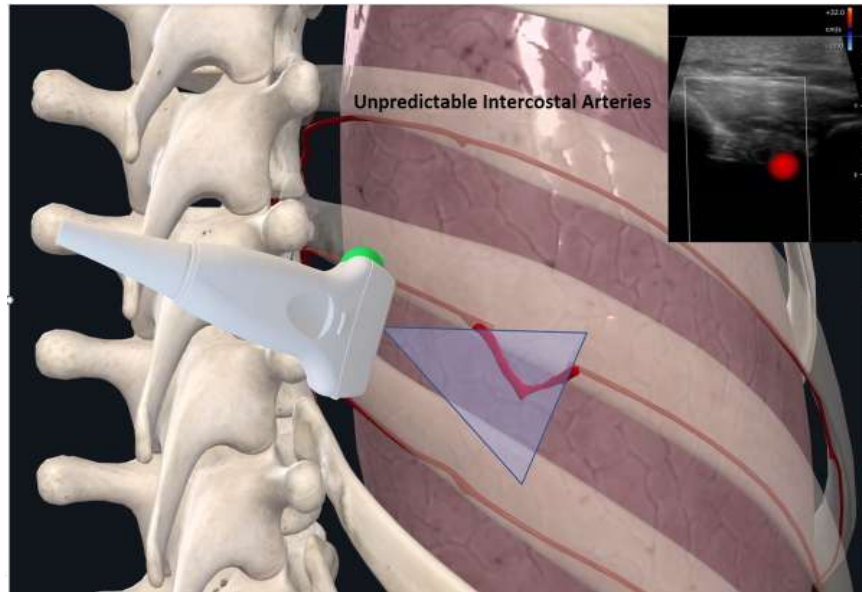
**Conclusions.** Clinical and radiographic RPE after large-volume thoracentesis is rare and independent of the volume of fluid removed, pleural pressures, and pleural elastance. The recommendation to terminate thoracentesis after removing 1 L of fluid needs to be reconsidered: large effusions can, and should, be drained completely as long as chest discomfort or end-expiratory pleural pressure less than  $-20$  cm H<sub>2</sub>O does not develop.

(Ann Thorac Surg 2007;84:1656–62)

© 2007 by The Society of Thoracic Surgeons

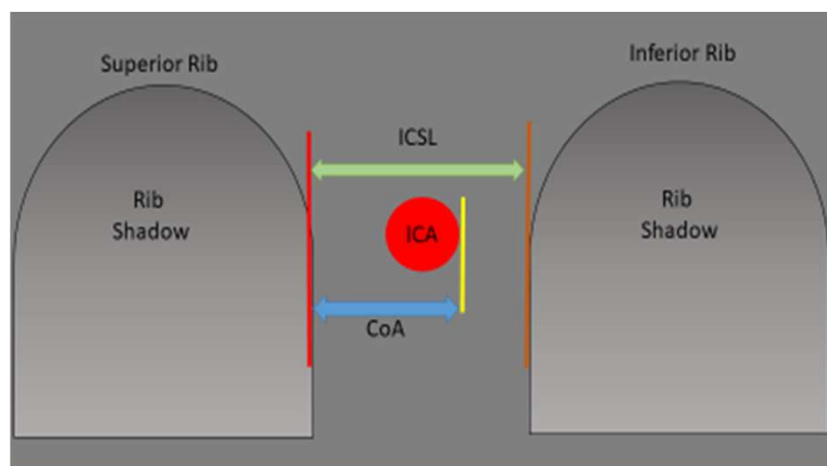
26

## Intercostal Artery Laceration

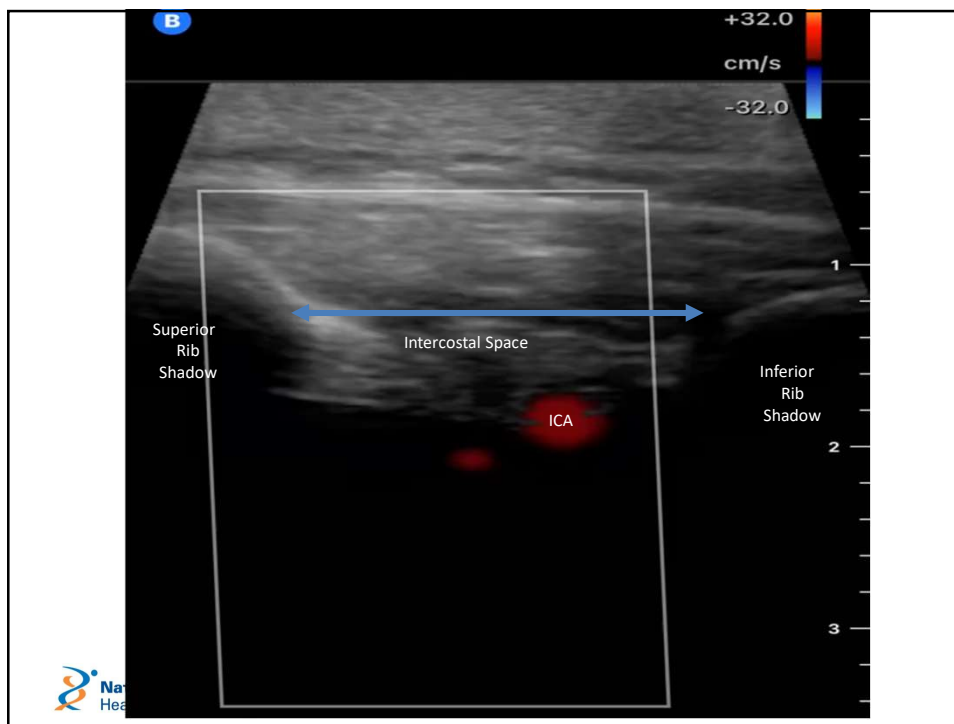


27

## Intercostal Artery Laceration



28



29



30

Thank You!



Aaron J. Calderon, MD, FACP, SFHM  
**Aaron.Calderon@imail.org**